

Psychology



Big school research opportunities meet small school personalized attention.

Careers

In recent years, Psychology majors have gone on to pursue advanced degrees and careers at:

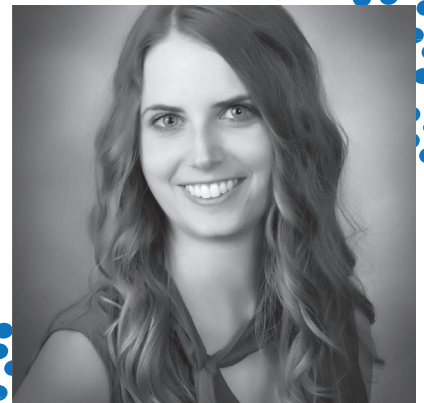
- Hospitals
- Police Departments
- Research Centers
- Social Services Agencies
- Private Practices
- Schools
- Federal Agencies

As a student in Ursuline's Psychology program, you'll choose from the applied or graduate school track and have the rare opportunity to choose from four undergraduate program clusters to tailor your program to your career goals:

- Clinical Forensic Psychology
- Experimental/Cognitive Psychology
- Industrial/Organizational Psychology
- School Psychology

You'll stay busy by conducting personal research in our state-of-the-art research lab and presenting your findings at the Student Research Symposium each year. Like many Ursuline students, you may have your proposal accepted to present at a local, state, or national conference. During your time here, you might also earn an induction into Ursuline's Psi Chi chapter or find inspiration from Ursuline alumni as you build your professional network.

"I loved that in my first year I was able to begin taking Psychology courses, and not just Psychology 101. What probably helped me the most was my ability to take so many research courses, allowing me to have a foundational understanding of research which was crucial in my PhD program."



Her Take

Allyson Weldon, PhD
Psychology graduate

**Make
Your World
More**

Ursuline College 

ursuline.edu/admission

Psychology

Program Highlights



Psychology Courses

PS 101	General Psychology
PS 222	Behavioral Statistics
PS 322	Research Methods I
PS 330	Abnormal Psychology
PS 335	Psychological Testing
PS 340	School Psychology
PS 350	Theory Personality
PS 380	Human Memory and Cognition
PS 430	Physiological Psychology
PS 490	Capstone Psychology

Example Psychology Electives

Clinical Forensic Psychology

PS 348	Forensic Psychology
PS 365	Personality Disorders and Criminal Behavior
PS 372	Psychological Profiling of Violent Offenders

Experimental/Cognitive Psychology

PS 424	Research Methods III
PS 461	Independent Study Research

Industrial/Organizational Psychology

PS 360	Industrial/Organizational Psychology
PS 422	Social Psychology

School Psychology

PS 310	The Psychology of the Autism Spectrum Disorders
PS 340	School Psychology

Where are Ursuline students accepted into Graduate Programs?

- Boston University
- Case Western Reserve University
- Kent State University
- Ohio State University
- University of Cincinnati
- Villanova University
- And more!

In addition to psychology courses, students are required to complete the Ursuline Core Curriculum.

For the most up-to-date course information, please visit our website.



Contact Us

Undergraduate Admission
admission@ursuline.edu
440.646.8362

**Make
Your World
More**

Ursuline College 
ursuline.edu/admission